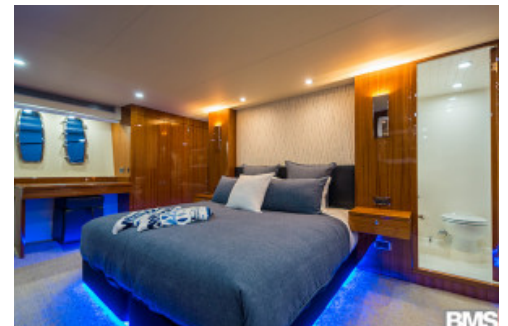




Maritimo M70 Cruising Motoryacht

\$2565853



Specifications

Boat Details

Price	\$2565853	Boat Brand	Maritimo
Model	M70 CRUISING MOTORYACH	Length	21.51
Year	2015	Category	Motor & Power Boats
Hull Style	Single	Hull Type	Fibreglass
Power Type	Power	Stock Number	BMS131
Condition	Used	State	Queensland
Suburb	SANCTUARY COVE	Engine Make	SCANIA

Disclaimer

Our company offers the details of this vessel in good faith but cannot guarantee or warrant the accuracy of this information nor warrant the condition of the vessel. A buyer should instruct his agents and/or surveyors to investigate such details buyer desires validated. This vessel is offered subject to prior sale, price change or withdrawal without notice.



Phone: +61 7 5514 8628

Email: info@bmsgc.com.au

Website: www.bmsgc.com.au/

44A The Promenade Sanctuary Cove QLD 4212

Description

Available for Immediate delivery and cruise ready.

A true head-turner right down to the finest detail. Step aboard and you will be immediately captivated by the sheer space of the Maritimo M70. Easily accommodating your family in style, safety and comfort for genuine blue water passage making or just weekend harbour cruising.

Amazing accomadation with four cabins, including a full beam king size master with full beam ensuite, 2 x VIP doubles both with ensuites and a double bunk cabin. Enormous galley with domestic sized refrigerators and Miele appliances, you can be the master entertainer or just relax surrounded by family and friends. Maritimo signature internal staircase leading to a flybridge larger than most other saloons plus options such as convertible berths, relocatable tables and a wet bar, will ensure an apartment feel and every creature comfort while on the sea.

When serious cruising is on the agenda the M70 excels. Maritimo super efficient shaft drive and hull design technology coupled to the 900HP Scania's ensure the best fuel consumption in it's class. The perfect example of where engineering and efficiency combine to deliver the ultimate performer.

This vessel would suit the new boat buyer and represents such amazing value.

Please enquire to book your private viewng with one of our Maritimo expert team.

Features

Designer	BILL BARRY-COTTER
Builder	MARITIMO OFFSHORE
Water (Potable) Capacity (l)	1400
Hull Construction Material	FIBRE GLASS
Hull Type	Mono
Deck Construction Material	Fibreglass
Country Origin	AUSTRALIA
Length (feet)	70'7
Length Waterline (m)	69'7
Beam/Width (feet)	18'8
Beam/Width (m)	5.67
Draft (m)	1.5
Dry Weight (kgs)	43000
Hull Length ISO	21.21
Number of Helms	1 Main Helm and 2 additional helm stations with thrusters and remote
Number Of Engines	2
Engine Hours	820
Horse Power (hp)	900

Disclaimer

Our company offers the details of this vessel in good faith but cannot guarantee or warrant the accuracy of this information nor warrant the condition of the vessel. A buyer should instruct his agents and/or surveyors to investigate such details buyer desires validated. This vessel is offered subject to prior sale, price change or withdrawal without notice.



Phone: +61 7 5514 8628

Email: info@bmsgc.com.au

Website: www.bmsgc.com.au/

44A The Promenade Sanctuary Cove QLD 4212

Engine Room	Spacious and tidy with moulded gelcoat finished engine bed and hull liner.
Generator	Upgrade to 2 x 17kw Onan Generators
Number of Batteries	Batteries - 4 x 210 amp engines, 4 x 210 amp house (deep cycle), Battery Charging: Inverter charger 4kw - 100amp charger
Fuel Type	Diesel
Fuel Tank Capacity (L)	6300L
Propeller	Nibral 5 blade
Steering System	Maritimo Power assist
Bow Thruster	Upgraded to Hydraulic
Stern Thruster	Upgraded to Hydraulic
Accommodation Notes	4 Cabin plus Crew quarters, Full beam master with ensuite, Guest VIP with ensuite port side, double berth to bow, twin bunks starboard side.
Number of Berths	8-10
Number of Showers	4, 3 internal, 1 Cockpit
Shower Type	Flick mixer with rose
Number of Toilets	3
Toilet Type	Electric macerator
Air Conditioning	Throughout
Number of TVs	4
Holding Tank (L)	300
Galley Notes	Microwave - Miele convection /microwave, speed oven, Full size opening pantry, Rubbish receptacle drawers x 2, Drawers for plates, cutlery and pans etc, Island bench in galley with corian top and storage cupboards with shelves with built in hand rails and Miele dishwasher, Corian galley bench tops, Amtico floor, Water gauge at electrical panel, LED lights to galley x 8, 240 volt GPO x 2
Stove	4 burner cook top - Miele
Refrigeration	2 door refrigerator/freezer (AC) - Miele, wine fridge - Miele
Number of Sinks	Stainless steel double sink with mixer tap and cupboard underneath
Entertainment and Appliances Notes	Samsung 40inch LED TV on electric up/down actuator, Bose Lifestyle 535 home entertainment system, Flybridge speakers - Bose 131 marine speakers including amp and remote, Cockpit speakers Bose 131 marine speakers including amp and remote, Blu-Ray player
Anchor / Winch	Reversible 24 volt heavy duty horizontal winch with foredeck and flybridge controls - Muir Thor 24V, Self stowing 68kg Galvanised anchor with CE compliant chain 13mm, 80 metres, Fit second 50 kg stainless steel anchor with 15M x10mm chain spliced to 60M x 16mm nylon rope, to store in portside anchor locker
Bilge Pump	Bilge pumps - Auto - 6 x 2000GPH
Deck Gear	Davit 500kg SWL - Single Stage Davit - Hydraulic, Marine Carpet to

Disclaimer

Our company offers the details of this vessel in good faith but cannot guarantee or warrant the accuracy of this information nor warrant the condition of the vessel. A buyer should instruct his agents and/or surveyors to investigate such details buyer desires validated. This vessel is offered subject to prior sale, price change or withdrawal without notice.



Phone: +61 7 5514 8628

Email: info@bmsgc.com.au

Website: www.bmsgc.com.au/

44A The Promenade Sanctuary Cove QLD 4212

Electrics

Electronics Navigation

Lazarette Floor, Lazarette layout to incorporate 2 x bunks each side, lifted 600mm and add 2 x portholes and install 12,000BTU air conditioner

240/24v

Simrad electronics package including: Simrad NSO EVO2 processors, 3 x MO19T 19inch wide duel touch screens, OP40 Controller, 4G broadband Radar, Separate AP 28 Auto Pilot head Unit, echo sounder with forward scan, VHF DSC Radio with built 1 AIS receiver, HD 35 Dual station wireless handset for VHF and intercoms, Simrad go free Wi Fi devise, Raymarine Cam 100 cameras x 3 to saloon, E/room and cockpit

Covers

Flybridge Rail Covers - Strata Glass

Ice Maker

Yes to entertainment unit

Watermaker / De-Sal

Idromar 130lph

GPS

Yes

Number of Fish Finders

1

Has Navigation Lights

Yes

Radio

VHF

Engine Details 1

Engine Make

SCANIA

Engine Hours

820

Horse Power

900

Fuel Type

Diesel

Drive Type

4

Steering

Maritimo Power assist

Fuel Capacity

6300

Propeller

Nibral 5 blade

Engine Details 2

Engine Make

SCANIA

Engine Hours

820

Horse Power

900

Fuel Type

Diesel

Drive Type

4

Steering

Maritimo Power assist

Fuel Capacity

6300

Propeller

Nibral 5 blade

Disclaimer

Our company offers the details of this vessel in good faith but cannot guarantee or warrant the accuracy of this information nor warrant the condition of the vessel. A buyer should instruct his agents and/or surveyors to investigate such details buyer desires validated. This vessel is offered subject to prior sale, price change or withdrawal without notice.